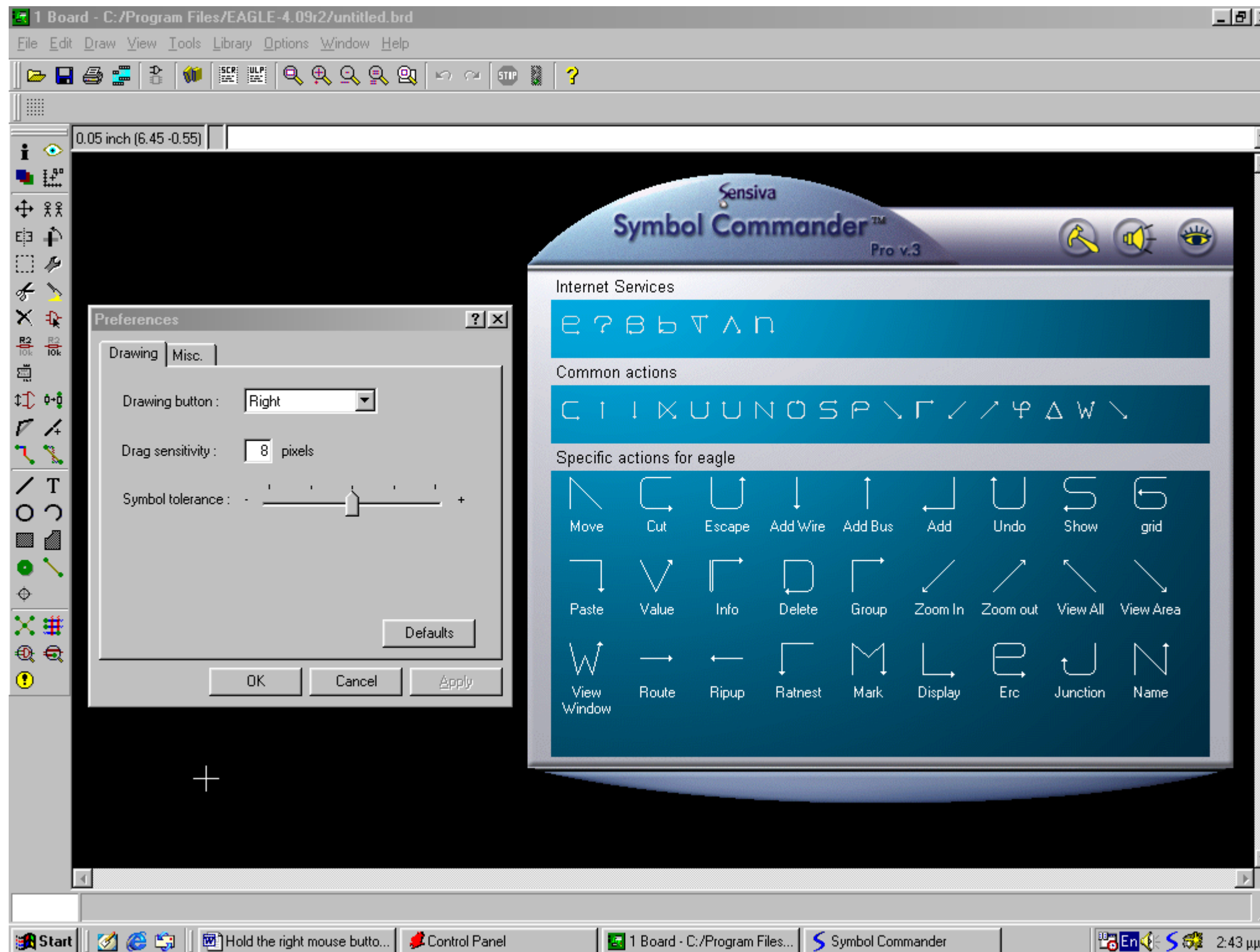


**Hold the right mouse button and sketch the desired symbol shape in order to execute most of the commands! For E.A.G.L.E. schematic and layout users only!**  
 Symbol Commander™ and my plug in will do the rest of the job!



**How to?**  
 Please take a look at the next page.

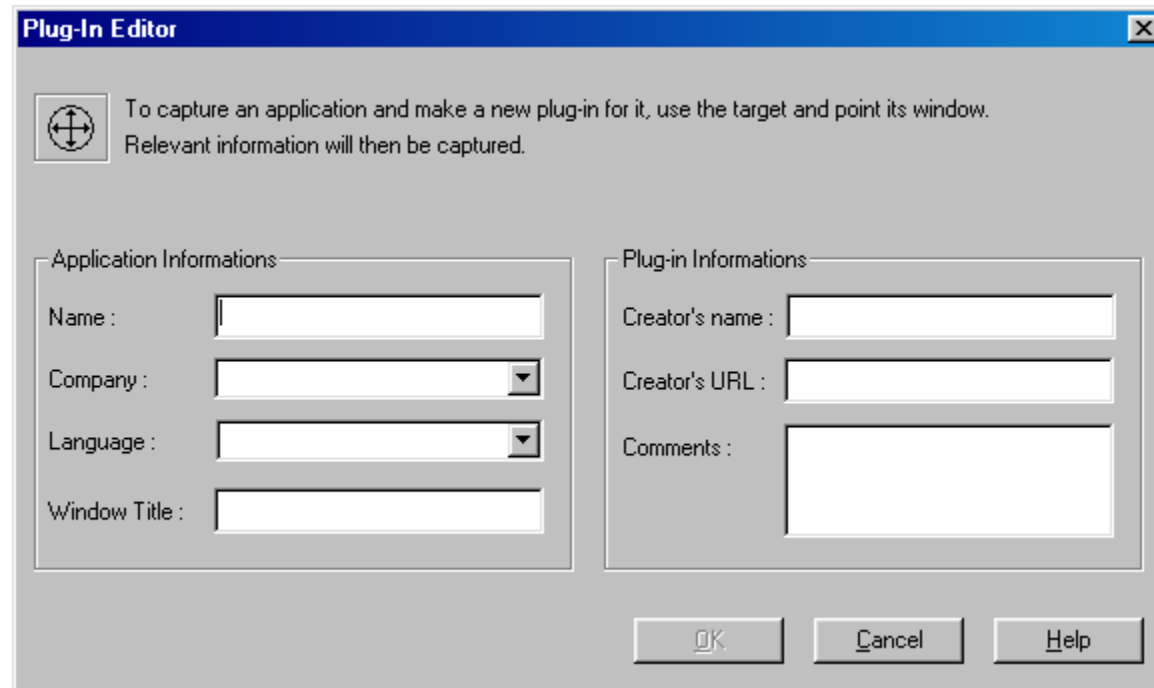
**Warning:** You are allowed to use the plug-in if you are a registered user of Symbol Commander Pro.

If you already have made your plugins with Symbol Commander Pro, DO NOT USE my E.A.G.L.E. plug-in. Simply - as Greek for me - you will lose every other plug-in.

Go to <http://www.sensiva.com> and download Symbol Commander™ pro.

Run both Eagle (control panel) and Sensiva.

To create a plug-in for Eagle, point over it (with your mouse) and then click twice on, “no specific actions available for this application”, at the maximized Sensiva program. Finally select "New plug-in".



**Plug-In Editor**

To capture an application and make a new plug-in for it, use the target and point its window. Relevant information will then be captured.

**Application Informations**

Name :

Company :

Language :

Window Title :

**Plug-in Informations**

Creator's name :

Creator's URL :

Comments :

OK Cancel Help

Drag the cross hair over the control panel of Eagle program.

Enter Eagle as name, type Cadsoft as company, and then select your language.

Optionally you may fill out in the right fields.

Press OK.

Right click on gipap.zip and extract all files within the directory C:\Program Files\Sensiva, Inc\Symbol Commander Pro\users\'your\_logon\_name\' - when prompted click yes.

Ready to go!

**All names and products mentioned may be properties of their respective owners.**

**George Papadimitriou**  
**Athens Greece**